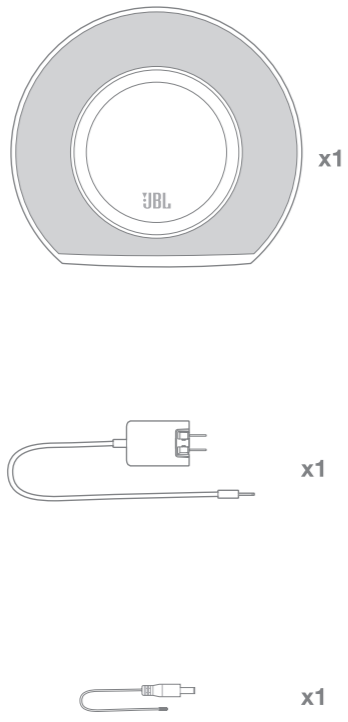




Horizon

Quick Start Guide
Guide de démarrage rapide

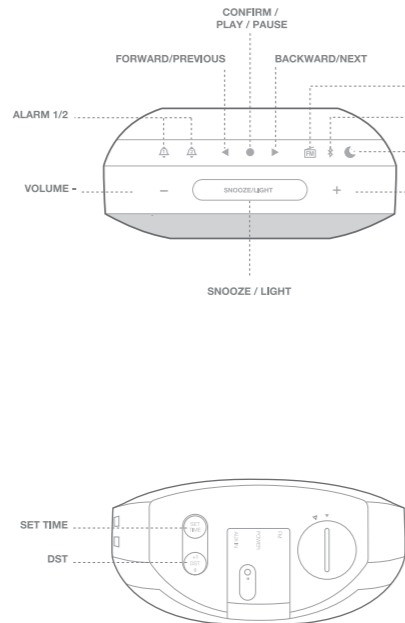
1 What's in the box



Horizon

Quick Start Guide
Guide de démarrage rapide

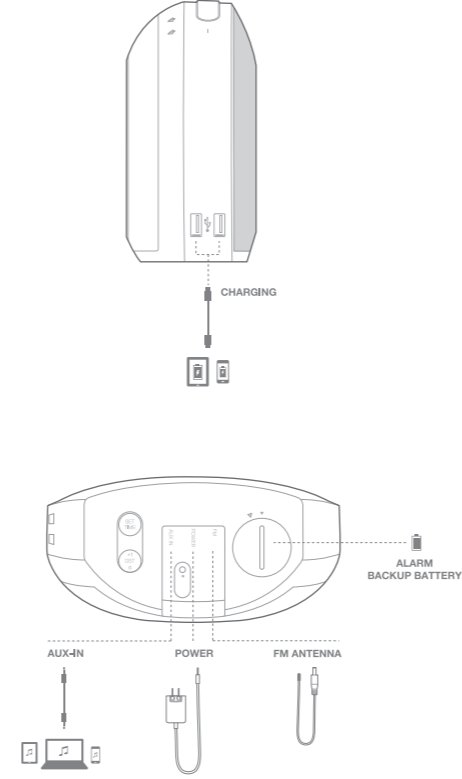
2 Buttons



Horizon

Quick Start Guide
Guide de démarrage rapide

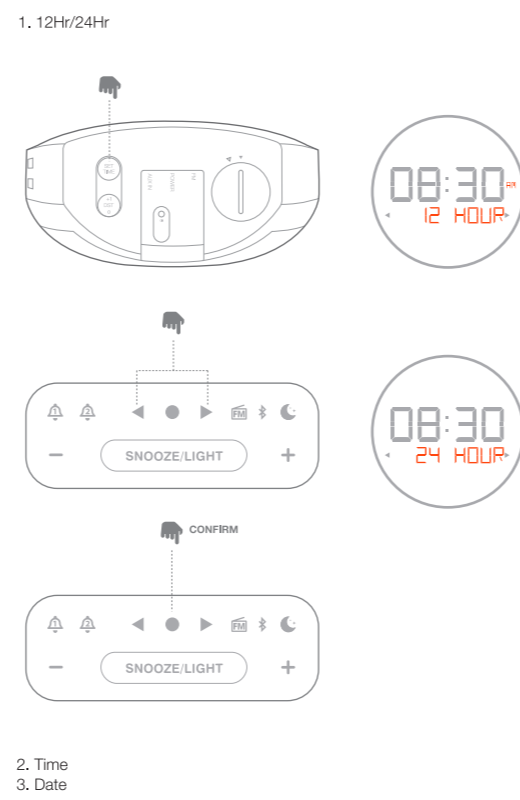
3 Connections



Horizon

Quick Start Guide
Guide de démarrage rapide

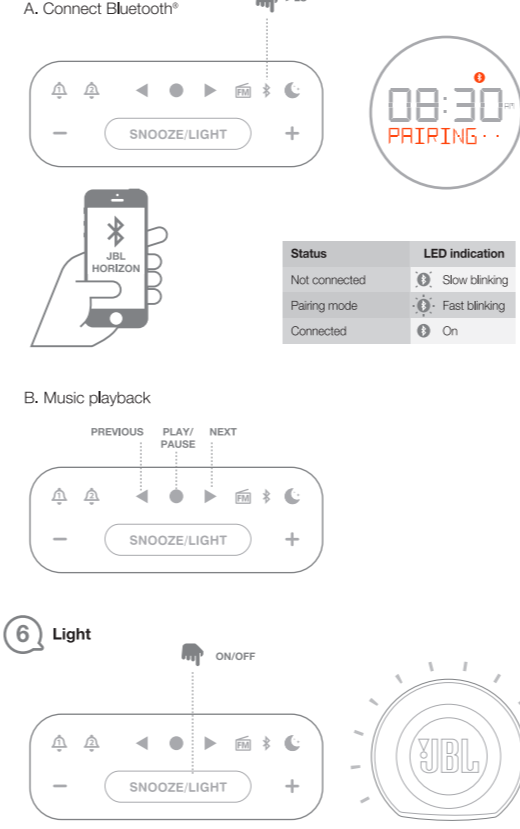
4 Set Time



Horizon

Quick Start Guide
Guide de démarrage rapide

5 Bluetooth



6 Light



Horizon

Quick Start Guide
Guide de démarrage rapide

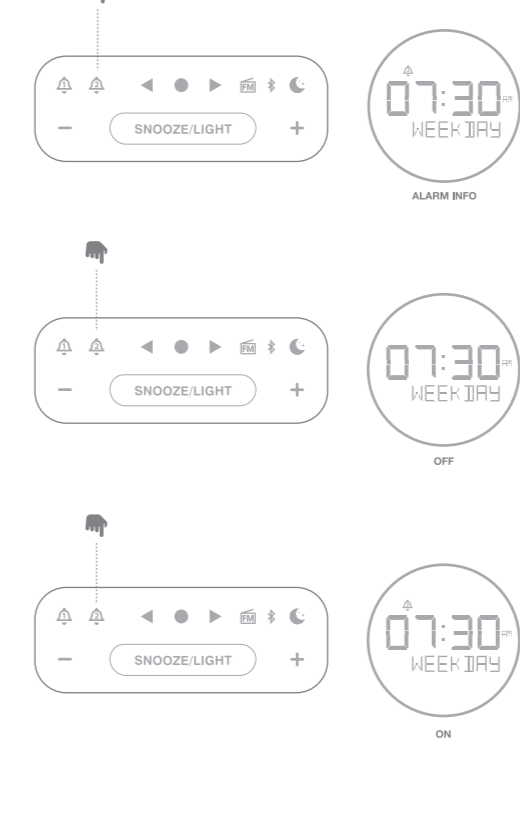
7 Alarm



Horizon

Quick Start Guide
Guide de démarrage rapide

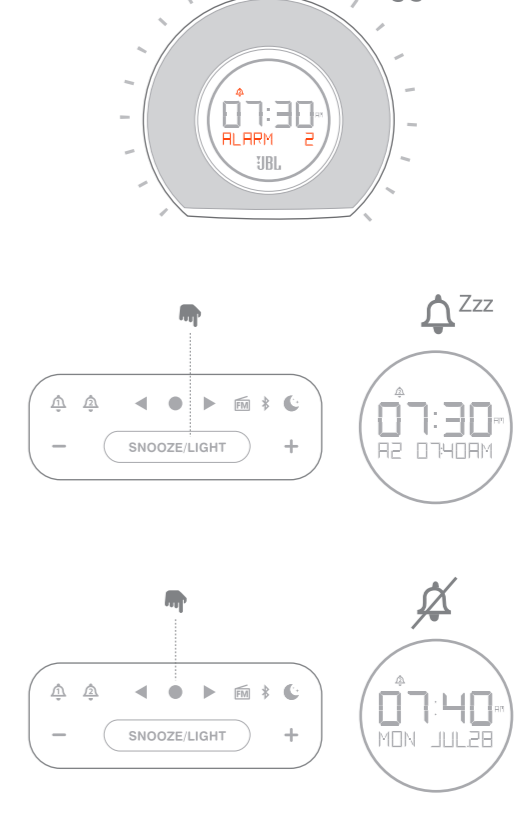
B. On / Off



Horizon

Quick Start Guide
Guide de démarrage rapide

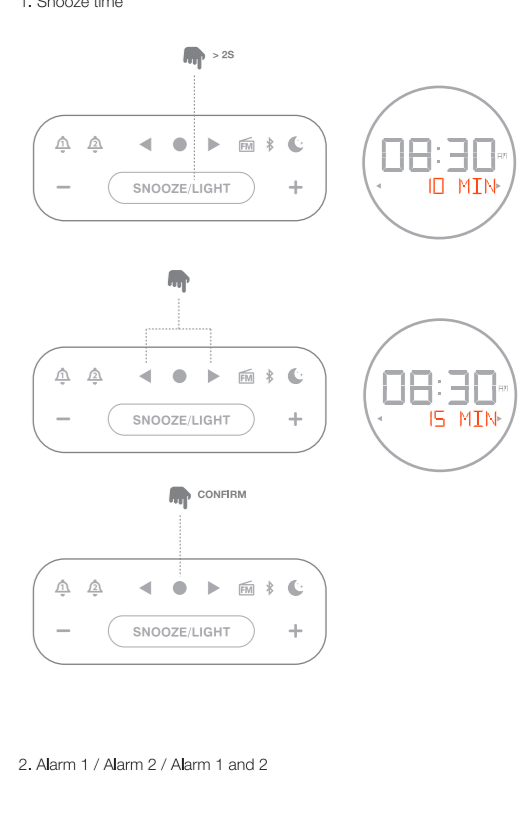
C. Ringing



Horizon

Quick Start Guide
Guide de démarrage rapide

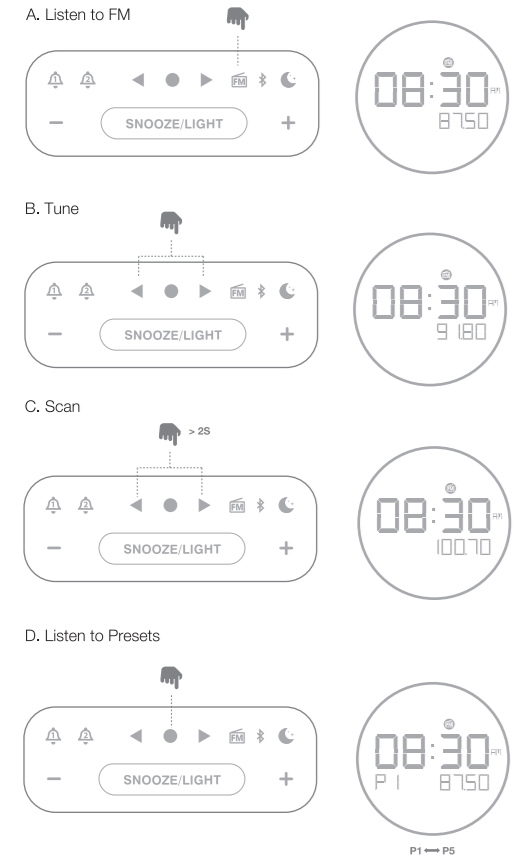
D. Snooze Settings



Horizon

Quick Start Guide
Guide de démarrage rapide

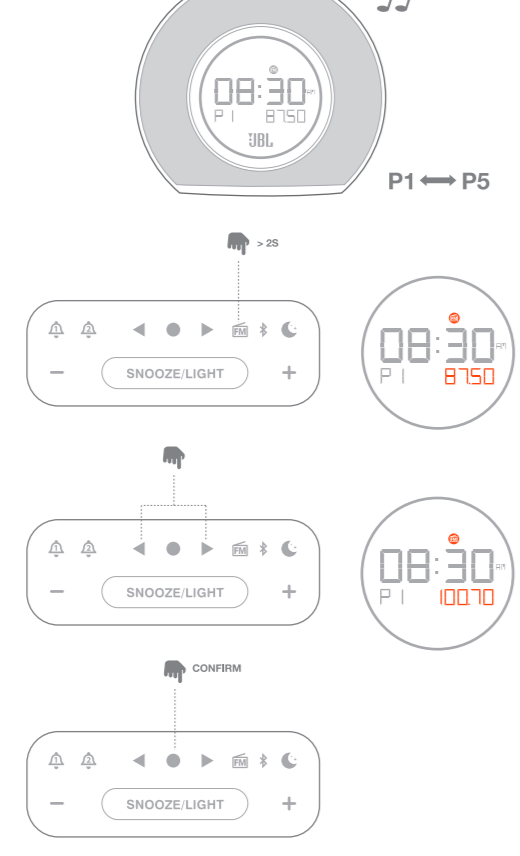
8 FM Radio



Horizon

Quick Start Guide
Guide de démarrage rapide

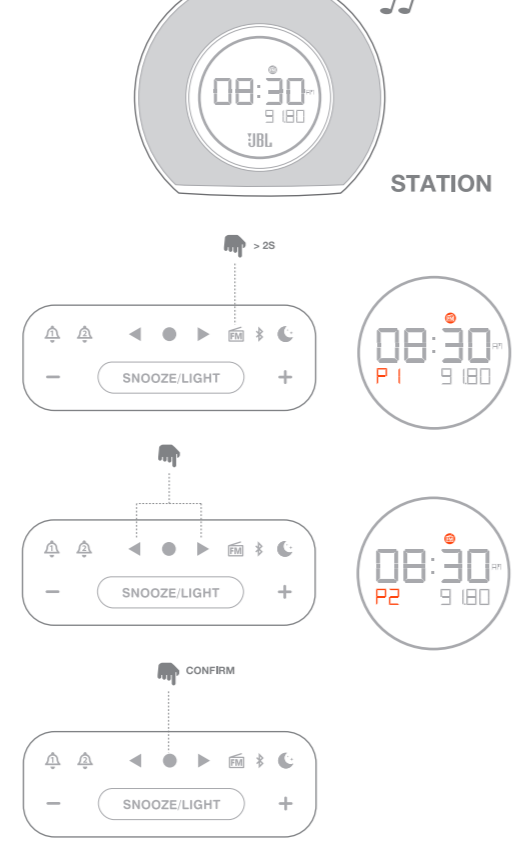
E. Set preset station



Horizon

Quick Start Guide
Guide de démarrage rapide

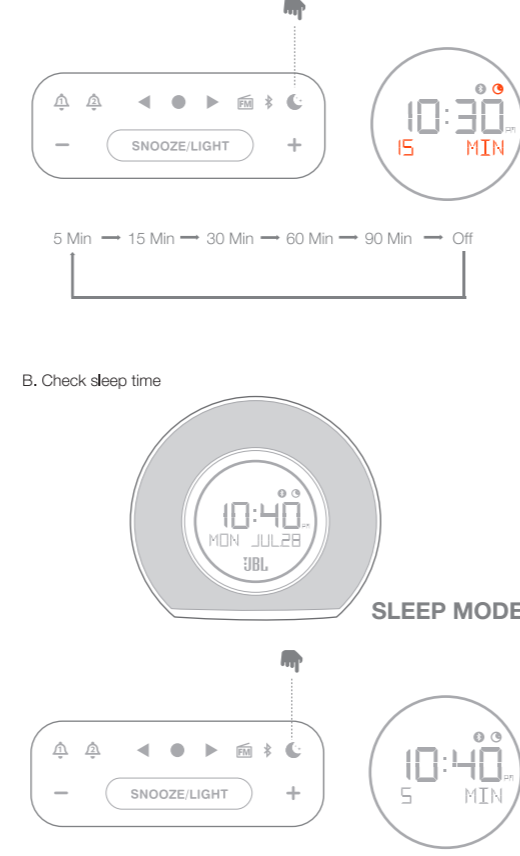
F. Save as preset



Horizon

Quick Start Guide
Guide de démarrage rapide

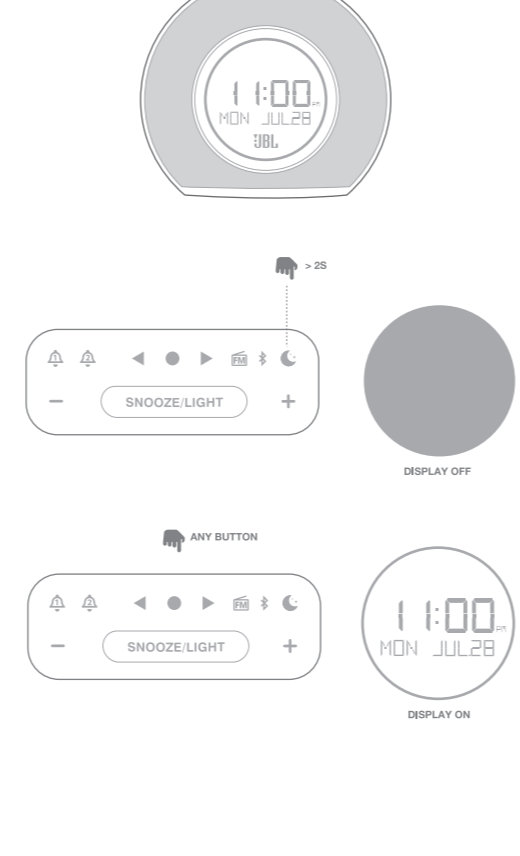
9 Sleep mode



Horizon

Quick Start Guide
Guide de démarrage rapide

10 Display on / off



Horizon

Quick Start Guide
Guide de démarrage rapide

EN

- Bluetooth® version: 4.1
- Support: A2DP V1.2, AVRCP V1.0
- Transducer: 2 x 45mm
- Rated power input: 2 x 5W
- Frequency response: 70Hz - 20kHz
- Max SPL: 82.5dB (81m)
- Power adaptor: 13VDC, 2.2A
- USB output: 5V, 1A (max) x 2
- FM frequency: 76 - 108 MHz (Frequency ranges vary by region)
- Bluetooth® transmitter power: 0-4 dBm
- Bluetooth® transmitter frequency range: 2,402 - 2,480 GHz
- Bluetooth® transmitter modulation: GFSK, n/4 DQPSK, 8DPSK
- Dimension (H x W x D): 162 x 183 x 81 (mm)
- Weight: 890 g

FR

- Version Bluetooth®: 4.1
- Support: A2DP V1.2, AVRCP V1.0
- Transducteur: 2 x 45 mm
- Alimentation nominale de entrée: 2 x 5 W
- Pression sonore max.: 82,5 dB (à 1 m)
- Adaptateur électrique: 13 VCC, 2,2 A
- Sortie USB: 5 V, 1 A (max) x 2
- Fréquence FM: 76 - 108 MHz (les bandes de réception varient selon la région)
- Puissance de l'émetteur Bluetooth®: 0-4 dBm
- Plage de fréquences de l'émetteur Bluetooth®: 2,402 - 2,480 GHz
- Modulation de l'émetteur Bluetooth®: GFSK, n/4 DQPSK, 8DPSK
- Dimensions (H x L x P): 162 x 183 x 81 (mm)
- Poids: 890 g

DE

- Bluetooth®-Version: 4.1
- Unterstützung: A2DP V1.2, AVRCP V1.0
- Umwandler: 2 x 45mm
- Freuenabhängigkeit: 70Hz - 20kHz
- Maximale Schalldruckpegel: 82,5dB (81m)
- Netzadapter: 13VDC, 2,2A
- USB-Ausgang: 5V, 1A (max) x 2
- Ucitra USB: 5 V, 1 A (max) x 2
- FM-Frequenz: 76 - 108 MHz (Empfangsbereich variiert je nach Region)
- Bluetooth®-Übertragungsbereich: 0-4 dBm
- Intervall von Frequenz der Bluetooth®-Übertragung: 2,402 - 2,480 GHz
- Modulation der Bluetooth®-Sender: GFSK, n/4 DQPSK, 8DPSK
- Abmessungen (H x B x T): 162 x 183 x 81 (mm)
- Gewicht: 890 g

IT

- Versione Bluetooth®: 4.1
- Supporto: A2DP V1.2, AVRCP V1.0
- Trasduttore: 2 x 45 mm
- Risposta di frequenza: 70 Hz - 20 kHz
- Max SPL: 82,5 dB (81 m)
- Adattatore di alimentazione: 13 VCC, 2.2 A
- Uscita USB: 5 V, 1 A (max) x 2
- Uscita USB: 5 V, 1 A (max) x 2
- Frequenza FM: 76 - 108 MHz (le frequenze di ricezione variano a seconda della zona)
- Potenza del trasmettitore Bluetooth®: 0-4 dBm
- Intervallo di frequenza del trasmettitore Bluetooth®: 2,402 - 2,480 GHz
- Modulazione del trasmettitore Bluetooth®: GFSK, n/4 DQPSK, 8DPSK
- Dimensioni (H x largh. x prof.): 162 x 183 x 81 (mm)
- Peso: 890 g

ES

- Version Bluetooth®: 4.1
- Compatibilidad: A2DP V1.2, AVRCP V1.0
- Transductor: 2 x 45 mm
- Potencia de entrada nominal: 2 x 5 W
- Intervalo de frecuencias: 70 Hz - 20 kHz
- Max SPL: 82,5 dB (81 m)
- Adaptador de alimentación: 13 VCC, 2.2 A
- Salida USB: 5 V, 1 A (máx) x 2
- Frecuencia FM: 76 - 108 MHz (los intervalos de recepción dependen de la región)
- Potencia del transmisor Bluetooth®: 0-4 dBm
- Alcance de frecuencia del transmisor Bluetooth®: 2,402 - 2,480 GHz
- Modulación del transmisor Bluetooth®: GFSK, n/4 DQPSK, 8DPSK
- Dimensiones (A x L x P): 162 x 183 x 81 (mm)
- Peso: 890 g

PT

- Versão Bluetooth®: 4.1
- Suporte: A2DP V1.2, AVRCP V1.0
- Transdutor: 2 x 45 mm
- Potência nominal de entrada: 2 x 5 W
- Resposta de frequência: 70 Hz - 20 kHz
- Max SPL: 82,5 dB (81 m)
- Adaptador de alimentação: 13 VCC, 2.2 A
- Saída USB: 5 V, 1 A (máx) x 2
- Frequência FM: 76 - 108 MHz (os intervalos de recepção variam de acordo com a região)
- Potência do transmissor Bluetooth®: 0-4 dBm
- Intervalo de frequência do transmissor Bluetooth®: 2,402 - 2,480 GHz
- Modulação do transmissor Bluetooth®: GFSK, n/4 DQPSK, 8DPSK
- Dimensões (A x L x P): 162 x 183 x 81 (mm)
- Peso: 890 g

NL

- Bluetooth®-versie: 4.1
- Ondersteuning: A2DP V1.2, AVRCP V1.0
- Transducer: 2 x 45mm
- Nominale opgenomen vermogen: 2 x 5 W
- Frequentiebereik: 70Hz - 20kHz
- Max SPL: 82,5dB (81m)
- Voedingadapter: 13VDC, 2,2A
- USB-uitgang: 5V, 1A (max) x 2
- FM-Frequentie: 76 - 108 MHz (ontvangstbereik verschilt per regio)
- Bluetooth®-zendervermogen: 0-4 dBm
- Bluetooth®-zenderfrequentiebereik: 2,402 - 2,480 GHz
- Modulatie van Bluetooth®-zender: GFSK, n/4 DQPSK, 8DPSK
- Afmetingen (B x H x L): 162 x 183 x 81 (mm)
- Wekt: 890 g

NO

- Bluetooth®-versjon: 4.1
- Støtte: A2DP V1.2, AVRCP V1.0
- Transducer: 2 x 45mm
- Rangert inngangseffekt: 2 x 5 W
- Frekvensrespons: 70Hz - 20kHz
- Max SPL: 82,5dB (81m)
- Strømforsyning: 13VDC, 2,2A
- USB-utgang: 5V, 1A (maks) x 2
- FM-Frekvens: 76 - 108 MHz (mottakområde varierer etter region)
- Bluetooth®-sändarens effekt: 0-4 dBm
- Bluetooth®-sändarens frekvensområde: 2,402 - 2,480 GHz
- Modulering for Bluetooth®-sender: GFSK, n/4 DQPSK, 8DPSK
- Mål (H x B x D): 162 x 183 x 81 (mm)
- Vekt: 890 g

SV

- Bluetooth®-version: 4.1
- Stöd: A2DP V1.2, AVRCP V1.0
- Element: 2 x 45mm
- Nominell effektutgång: 2 x 5 W
- Frekvensområde: 70 Hz - 20 kHz
- Max SPL: 82,5 dB (81 m)
- Strömadapter: 13 VDC, 2,2 A
- USB-utgång: 5 V, 1 A (max) x 2
- FM-frekvens: 76 - 108 MHz (mottagningsområdet varierar efter region)
- Bluetooth®-sändarens effekt: 0-4 dBm
- Bluetooth®-sändarens frekvensområde: 2,402 - 2,480 GHz
- Bluetooth®-sändarens modulering: GFSK, n/4 DQPSK, 8DPSK
- Mål (H x B x D): 162 x 183 x 81 (mm)
- Vikt: 890 g

DA

- Bluetooth®-version: 4.1
- Understøttelse: A2DP V1.2, AVRCP V1.0
- Transducer: 2 x 45mm
- Nominel effektindput: 2 x 5 W
- Frekvensområde: 70 Hz - 20kHz
- Max SPL: 82,5 dB (81 m)
- Strømforsyning: 13 VDC, 2,2 A
- USB-udgang: 5 V, 1 A (maks) x 2
- FM-frekvens: 76 - 108 MHz (modtagelsesområdet varierer efter region)
- Bluetooth®-sendereffekt: 0-4 dBm
- Frekvensområde for Bluetooth®-transmitter: 2,402 - 2,480 GHz
- Bluetooth®-sendereffekt: GFSK, n/4 DQPSK, 8DPSK
- Mål (H x B x D): 162 x 183 x 81 (mm)
- Vægt: 890 g

CHS

- 蓝牙版本: 4.1
- 支持: A2DP V1.2, AVRCP V1.0
- 扬声器: 2 x 45mm
- 额定功率输出: 2 x 5W
- 频率范围: 70Hz - 20kHz
- 最大 SPL: 82.5dB (81m)
- 电源适配器: 13VDC, 2.2A
- USB 输出: 5V, 1A (最大) x 2
- FM 频率: 76 - 108 MHz (接收范围所在区域会变化)
- 蓝牙发射功率: 0-4 dBm
- 蓝牙发射频率范围: 2,402 - 2,480 GHz
- 蓝牙发射调制: GFSK, n/4 DQPSK, 8DPSK
- 尺寸 (高 x 宽 x 深): 162 x 183 x 81 (mm)
- 重量: 890 g

CHT

- Bluetooth® 版本: 4.1
- 支援: A2DP V1.2, AVRCP V1.0
- 揚聲器: 2 x 45mm
- 额定功率輸出: 2 x 5W
- 頻率範圍: 70Hz - 20kHz
- 最大 SPL: 82.5dB (81m)
- 電源适配器: 13VDC, 2.2A
- USB 輸出: 5V, 1A (最大) x 2
- FM 頻率: 76 - 108 MHz (接收範圍所在區域會變化)
- Bluetooth® 發射機功率: 0-4 dBm
- Bluetooth® 發射機頻率範圍: 2,402 - 2,480 GHz
- Bluetooth® 發射機調製: GFSK, n/4 DQPSK, 8DPSK
- 尺寸 (高 x 寬 x 深): 162 x 183 x 81 (mm)
- 重量: 890 g

Horizon

Quick Start Guide
Guide de démarrage rapide

1D

- Versi bluetooth®: 4.1
- Support: A2DP V1.2, AVRCP V1.0
- Transduser: 2 x 45mm
- Responsi frekuensi: 70Hz - 20kHz
- SPL Maks: 82.5dB (81m)
- Adaptor daya: 13VDC, 2.2A
- Output USB: 5V, 1A (maks) x 2
- Frekkuensi FM: 76 - 108 MHz (jangkauan terma bervariasi menurut wilayah)
- Daya transmisi Bluetooth®: 0-4 dBm
- Jangkauan transmisi Bluetooth®: 2,402 - 2,480 GHz
- Modulasi transmisi Bluetooth®: GFSK, n/4 DQPSK, 8DPSK
- Berat: 890 g

Техническая информация:
Назначение товара: АКТИВНАЯ АКУСТИЧЕСКАЯ СИСТЕМА
Изготовитель: JBL HARMAN INTERNATIONAL INC.
Импортер в Россию: ООО "КАРМАН РУС"
Сеть продаж: ООО "СЕРВИС", ООО "СЕРВИС", ООО "СЕРВИС"
Срок службы: 7 лет
Информация о сервисном центре:
http://www.jbl.com, тел. +7800-7000467



Este equipamento opera em caráter secundário, isto é, não tem direito a proteção contra interferência prejudicial, mesmo de estações do mesmo tipo, e não pode causar interferência a sistemas operando em caráter primário.

Para maiores informações, consulte o site da ANATEL - www.anatel.gov.br



2857-14-6506



(01)07896359534821

CE0560